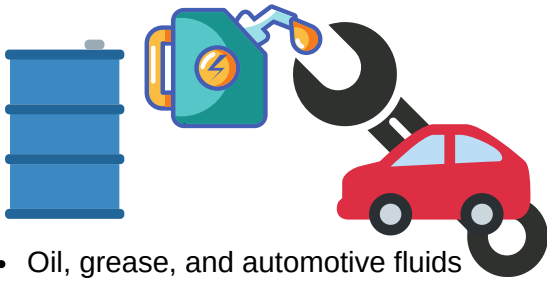




ILLICIT DISCHARGE

Only rain down the drain!

SOURCES:



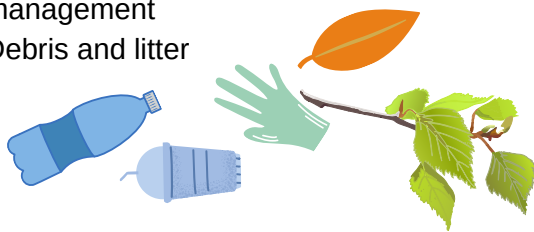
- Oil, grease, and automotive fluids
- Soap from car washing



- Fertilizers and pesticides
- Bacteria from pet waste and improperly maintained septic systems



- Soil from poor construction site management
- Debris and litter



WHAT IS ILLICIT DISCHARGE?

Illicit discharge is any substances that flow into storm drains that are not entirely composed of stormwater. **Exceptions** include water used on your lawn and firefighting activities.

WHY IS ILLICIT DISCHARGE A PROBLEM?

Storm drains lead **directly** to local water bodies and leach into groundwater. Pollutants that enter the storm drains wind up in the water we drink and enjoy for recreation. Even though water is **naturally** filtrated through earth, not all toxins are filtered out. When contaminated well-water (groundwater) is pumped back up for public use it can cause illness for vulnerable populations.

WHAT CAN I DO TO HELP?

- Never dump, wash, or sweep anything into the storm drains
- Wash your vehicle at a car wash or on the grass - **not in the driveway**
- If you change you own motor oil, recycle the used oil
- Dispose of hazardous household chemicals properly
- Water your lawn wisely and reduce the amount of fertilizer and pesticides used

Report a spill or illegal dumping:

If you see a spill or notice someone disposing a hazardous substance into a street or storm drain, immediately contact Nampa's Environmental Compliance Division.

(208) 468-5476

ECD@cityofnampa.us

You can also file an illegal dumping report online at Nampa's stormwater website

www.cityofnampa.us/574/Environmental-Compliance