

**Venue Management Advisory Commission**

**MINUTES**

Thursday, ~~October~~ <sup>October</sup> 21, 2021 3:30 pm  
Ford Idaho Center (Ticket Office Building)  
16114 N Idaho Center Blvd Nampa Ida 83687

Kenny Wroten called the meeting to order at 3:30 p.m.

Present: Sherri Boardman, Kenny Wroten, Tami Conibear, Curtis Homer Andrew Luther, Joy Hall  
Present via phone: Mayor Debbie Kling and Erica Hernandez

1. New Business

**1.1 Approve Minutes from September 16, 2021 – Action Item**

Motion made to approve the minutes by Sherri Boardman, seconded by Tami Conibear  
*Motion passed unanimously.*

**1.2 Venue Update – Andrew Luther – No Formal Action Needed**

The formal horse season is wrapping up for this year, which proved to a very good season.

The amphitheater also has just wrapped up this year's season.

The civic center has dealt with some ups and downs in bookings due to the pandemic restrictions, but the recent Oktoberfest set a new attendance record.

Financial report – It has been a strong year and working on the final numbers for a future meeting.

The expansion for the Horse RV park is in the planning stage.

Staffing has been a challenge for all aspects of the venues. We are working on how we can be creative to bring in more groups to assist in the food vendor areas. We have been able to fill some of the open positions at FIC and the Civic Center.

Andrew and Mitch are currently working on the creation of an Auditorium District.

2. Open Discussion - **No Formal Action Needed**

**2.1** Sharing information with a sister facility in Colorado is proving to be a valuable move. Learning what works for them and what does not work, saving Nampa time and money.

Sherri spoke about the positive feedback she has heard from users of the horse park.

Erica Hernandez explained why an auditorium fee is being charged at a Nampa hotel if we do not have an auditorium district.

Rick Hogaboam suggested a list of upcoming capital projects would be nice to work with. Andrew Luther and Kenny Wroten said they already had a list in the works and would bring to an upcoming meeting.

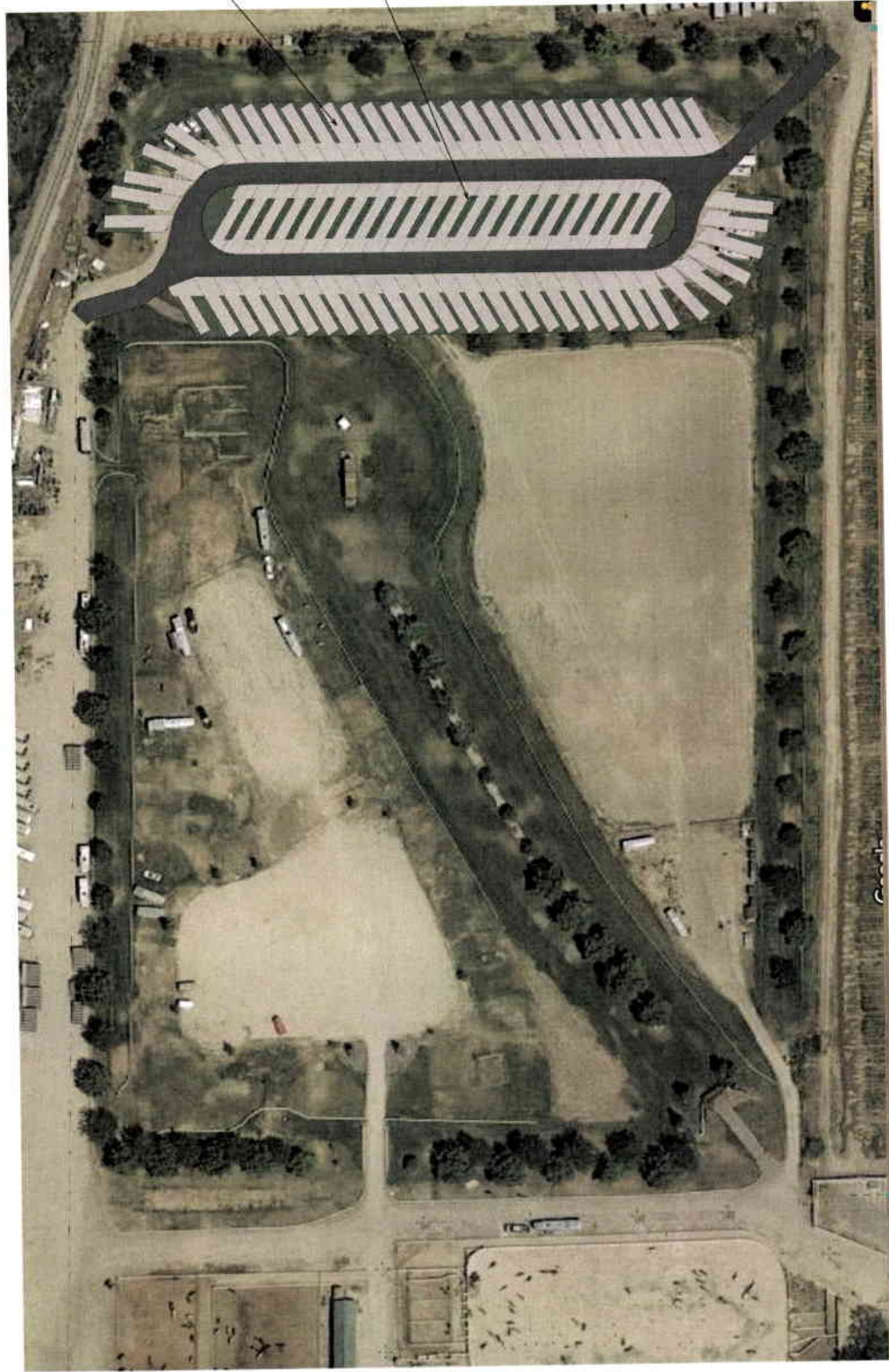
**3. Adjourn – Action Item**

Motion made to adjourn by Curtis Homer, seconded by Tami Conibear  
*Motion passed unanimously*

Approved this 18th day of November, 20 21

  
\_\_\_\_\_  
Chair

ATTEST:   
\_\_\_\_\_  
Secretary



(60) BACK-IN SPACES  
60 FT. LONG

MIDDLE AISLE = (22) FULL  
THROUGH SPACES (74 FEET  
LONG) OR (44) SMALLER  
BACK IN SPACES ( 37 FEET  
EACH)

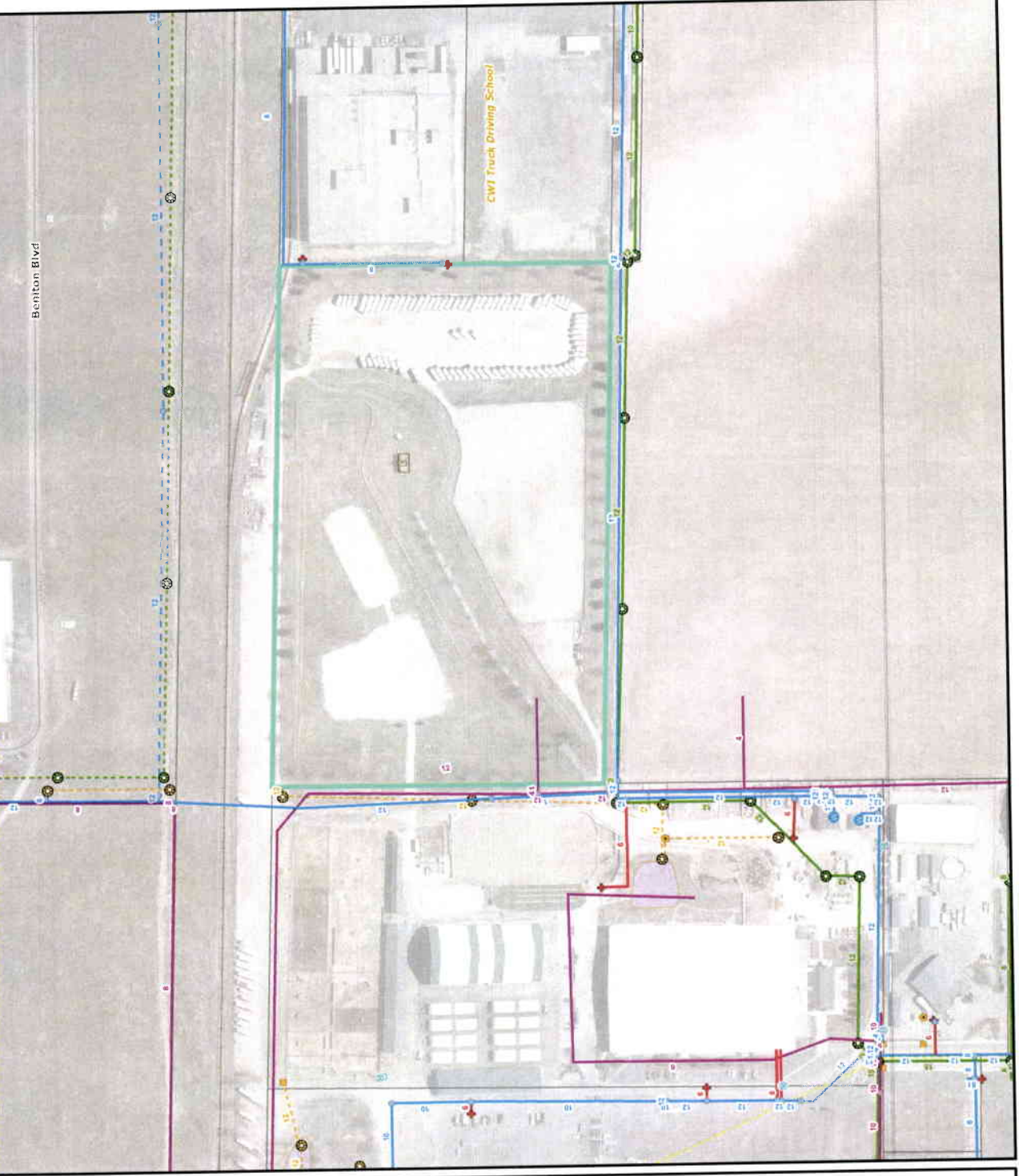
# Utility Map

## Basemap

- Road
- Trail
- Road (Proposed)
- Railroad
- Wetland
- Parcel
- Parcel selection

## Utility Infrastructure

- Water (Inactive, Private, etc.)
- Fire Line (Active)
- Hydrant
- Domestic Well
- Domestic Valve
- Water Meter
- Pressure Irrigation (Inactive, Private, etc.)
- Pressure Irrigation (Active)
- Irrigation Pump (Active)
- Irrigation Pump (Inactive)
- Irrigation Valve
- Pressure Sewer (Inactive, Private, etc.)
- Pressure Sewer (Active)
- Sewer (Inactive, Private, etc.)
- Sewer (Active)
- Sewer Lift Station
- Sewer Manhole
- SD (Inactive, Private, etc.)
- SD (Active)
- SD Catch Basin
- SD Manhole
- SD Sand Grease Trap
- SD Pond
- Telecom Line (Inactive, Private, etc.)
- Telecom Line (Active)
- Telecom Conduit (Inactive, Private, etc.)
- Telecom Conduit (Active)
- Telecom Structure (Inactive, Private, etc.)
- Telecom Structure (Active)
- Signal Cabinet
- Signal Pole
- Signal Mast Arm
- Streetlight (Inactive, Private, etc.)
- Streetlight (Active)



NAMPAnet



Before You Dig!  
Call 811  
www.digline.com



5/22/2020

1 inch = 200 feet  
Original Size: 11" x 17"



©2020 NAMPA. This map is a computer-generated map based on the GIS data from the City of Denver. The City of Denver does not warrant the accuracy of the information shown on this map. The City of Denver is not responsible for any errors or omissions on this map. The City of Denver is not responsible for any damage or injury resulting from the use of this map. The City of Denver is not responsible for any loss of data or information resulting from the use of this map. The City of Denver is not responsible for any other consequences resulting from the use of this map. The City of Denver is not responsible for any other consequences resulting from the use of this map.